

SMART^{Tr}

Your Trusted Partner in Electrical & Mechanical Support

BRITISH STANDARD CONDUITS & ACCESSORIES CATALOGUE

(BS EN 61386 IEC)

STEEL CONDUITS

MALLEABLE IRON FITTINGS
& ACCESSORIES

FLEXIBLE CONDUIT SYSTEMS

STAINLESS STEEL CONDUIT
& ACCESSORIES



SINGAPORE
BRAND

2025 Edition 1.4

Built for Harsh Conditions
Trusted for Performance
Designed with Precision

1 || INTRODUCTION

Some Good Reasons To Use SMARTr Products

2 || BRITISH STANDARD HOT-DIPPED GALVANIZED CONDUITS

CLASS 4
BS EN 61386-21:2004

3 || HOT-DIPPED GALVANIZED CONDUITS FITTINGS & ACCESSORIES

SMALL CIRCULAR BOXES

Terminal Box 1 Way	Twin Thru "U" Box 2 WAY
Through Box 2 WAY	Branch "Y" Box 3 WAY
Angle Box 2 WAY	Terminal Box W/Back Hole
Tee Box 3 WAY	Twin Thru "H" Box 4 WAY
Cross Box 4 WAY	Boxes With Back Hole Outlet

4 || LARGE CIRCULAR BOXES

5 || BRITISH STANDARD ELECTRO-GALVANIZED (PG) CONDUITS

CLASS 3
BS EN 61386-21:2004

CIRCULAR BOXES

Terminal Box 1 Way
Through Box 2 WAY
Angle Box 2 WAY
Tee Box 3 WAY
Cross Box 4 WAY

6 || BRITISH STANDARD EPOXY COATED CONDUITS & FITTINGS

Class 3 & 4 Conduits
BS EN 61386-21:2004
Epoxy Powder Coated Conduits
BS EN 61386-21:2004

CIRCULAR BOXES & OTHERS

Terminal Box 1 Way
Through Box 2 WAY
Angle Box 2 WAY
Tee Box 3 WAY
Cross Box 4 WAY
Spacer Bar Saddle
Coupling

7 || BRITISH STANDARD FITTINGS & ACCESSORIES

FITTINGS & ACCESSORIES

Looping Box
Extension Ring

INSPECTION & BENDING FITTINGS

Inspection Elbow
Inspection Tee

COVERS

Circular Cover
Rubber Gasket
Dome Lid
Ball & Socket

8 || BRITISH STANDARD FITTINGS & ACCESSORIES

INSPECTION & BENDING FITTINGS

Inspection Bend
Solid Bend
Solid Long Bend

COUPLINGS

Coupling
Screwless Coupling
Flange Coupling
Expansion Coupler
Short Nipple

9 || BRITISH STANDARD CONDUIT FIXINGS

Spacer Bar Saddle
Heavy Duty — Distance Saddle
Plain Saddle
Half Saddle
Conduit Pipe Clamp
Pipe Hanger
Kon Clip

10 || BRITISH STANDARD CONDUIT FIXINGS

REDUCERS/ PLUGS

Conduit Pipe Reducer
Stopping Plug

BUSHINGS

Short Male Bush
Short Female Bush
Long Male Bush

LOCKNUTS

Locking Ring
Locknut

11 || BRITISH STANDARD SWITCH & SOCKET BOXES / ADAPTABLE BOXES

KNOCK-OUT BOXES

1 Gang K.O. Box
2 Gang K.O. Box

KNOCK-OUT BOXES with "FISH TAIL"

1 Gang K.O. Box with "Fish Tail"
2 Gang K.O. Box with "Fish Tail"

STEEL ADAPTABLE BOXES

12 || BRITISH STANDARD FLEXIBLE CONDUIT SYSTEMS

P.V.C COATED G.I. FLEXIBLE CONDUITS
STEEL FLEXIBLE CONDUITS

13 || BRITISH STANDARD FLEXIBLE CONDUIT SYSTEMS

LOW SMOKE ZERO HALOGEN COATED FLEXIBLE CONDUITS
LIQUID TIGHT FLEXIBLE CONDUITS
SPACING SUPPORT FOR FLEXIBLE CONDUITS

14 || BRITISH STANDARD FLEXIBLE CONDUIT SYSTEMS

FLEXIBLE CONDUIT ADAPTORS

Flexible Adaptor With Retaining Screw (BF-FA)
Female Adaptor (BF-FFA)
Nickel Pated Adaptor - 2Pcs Male Adaptor (BF-FA-T)
Liquid/ Water Tight Nickel Plated 2 Part Brass Male Adaptor
- Heavy Gauge (BF-FA-WT)
Liquid/ Water Tight Male Adaptor (FA-WT)
Liquid/ Water Tight Female Adaptor (FFA-WT)

15 || BRITISH STANDARD STAINLESS STEEL CONDUIT SYSTEMS

Stainless Steel Conduits
BS EN 61386-21:2004

CIRCULAR BOXES

Terminal Box 1 Way
Through Box 2 WAY
Angle Box 2 WAY
Tee Box 3 WAY
Cross Box 4 WAY

STAINLESS STEEL ADAPTABLE BOXES

16 || BRITISH STANDARD STAINLESS STEEL CONDUIT FITTINGS & FIXINGS ACCESSORIES

CONDUIT FITTINGS & FIXINGS ACCESSORIES

Dome Lid	Distance Saddle
Spacer Bar Saddle	Coupling
Hex Locknut	Flexible Adaptor (FA-WT)
Solid Bend	
Male Bush	

17 || BRITISH STANDARD STAINLESS STEEL ADAPTABLE BOXES & FLEXIBLE CONDUIT SYSTEMS

Stainless Steel Adaptable Boxes
Stainless Steel Flexible Conduit
Spacing Support For Flexible Conduits
Flexible Conduit Adaptors

18 || TECHNICAL REFERENCE CONDUIT CAPACITY & SPACING

Cable Capacities Of Conduits
Straight Runs Not Exceeding 3 Meters In Length
Straight Runs Not Exceeding 3 Meters In Length Or Runs Of Any Length
Spacing Support For Conduits

SMART[®]

Your Trusted Partner in Electrical & Mechanical Support

INTRODUCTION



Your Trusted Partner
in Electrical & Mechanical Support

Reliable Partner in Conduit Solutions Since 1996

SMART[®] International is a Singapore-based manufacturer specializing in electrical containment solutions such as **conduit systems, trunking and cable support structures**, serving the region since 1996. Certified under **ISO 9001:2015** and **ISO 14001:2015**, we are committed to delivering industry-compliant, quality-assured solutions across Southeast Asia, Middle East and international markets.

Our production process follows strict QC protocols from raw material selection to final inspection, ensuring **dimensional consistency, accurate performance**, and long-term reliability.

SMART[®] containment products are trusted and widely used in major infrastructure, commercial, and industrial projects throughout Singapore and the region.

Why Is SMART[®] Conduit Better?



High quality mild steel which ensures superior bending and forming properties



Manufactured by cold forming and high frequency welding



Dimensionally accurate with uniform quality



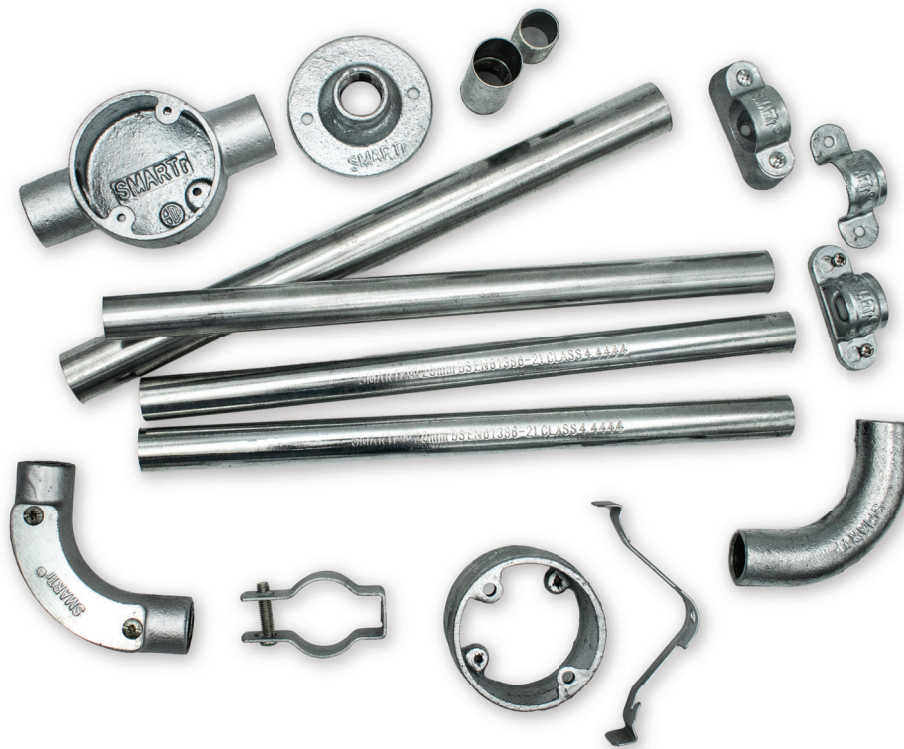
Each Length distinctly marked with embossed branding



Conduits are securely packed and bundled to ensure easy handling and maximum protection

BRITISH STANDARD CONDUITS HOT-DIPPED GALVANIZED

CLASS 4 CONDUITS (BS EN 61386-21:2004)



CHARACTERISTICS & APPLICATIONS

- Supplied with one standard coupler per length
- Hot-Dipped Galvanized / Z450
- Metric-size threadings
- Smooth interior for easy cable pulling
- Higher protection against corrosion
- Suitable for outdoor use which requires higher level of corrosion protection

****Note:** BS 4568: Part 1:1970 and BS EN 50086-2-1:1996 have been officially withdrawn and superseded by BS EN 61386-21:2004.

NOMINAL SIZE	ITEM CODE	OUTSIDE DIAMETER	LENGTH W/O COUPLING	NO. OF LENGTHS PER BUNDLE	NO. OF BUNDLE PER LIFT	TOTAL LENGTHS PER LIFT
20mm	CP-20-4-SMTR	19.7mm – 20.0mm	3.75 Metres	10	20	200
25mm	CP-25-4-SMTR	24.6mm – 25.0mm	3.75 Metres	10	20	200
32mm	CP-32-4-SMTR	31.6mm – 32.0mm	3.75 Metres	5	20	100
38mm	CP-38-4-SMTR	37.6mm – 38.0mm	3.75 Metres	5	10	50
50mm	CP-50-4-SMTR	49.5mm – 50.0mm	3.75 Metres	5	10	50

BRITISH STANDARD HOT-DIPPED GALVANIZED FITTINGS & ACCESSORIES

CLASS 4 SMALL CIRCULAR BOXES

TERMINAL BOX - 1 WAY

ITEM CODE	SIZE	BOX/CTN (QTY)
CF-20-1W-SMTR	20mm	10/100
CF-25-1W-SMTR	25mm	10/100



TWIN THRU 'U' BOX - 2 WAY

ITEM CODE	SIZE	BOX/CTN (QTY)
CF-20-U-SMTR	20mm	10/100
CF-25-U-SMTR	25mm	10/100



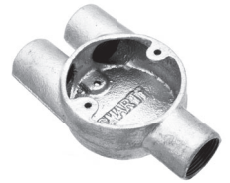
THROUGH BOX - 2 WAY

ITEM CODE	SIZE	BOX/CTN (QTY)
CF-20-2W-SMTR	20mm	10/100
CF-25-2W-SMTR	25mm	10/100



BRANCH 'Y' BOX - 3 WAY

ITEM CODE	SIZE	BOX/CTN (QTY)
CF-20-Y-SMTR	20mm	10/100
CF-25-Y-SMTR	25mm	10/100



ANGLE BOX - 2 WAY

ITEM CODE	SIZE	BOX/CTN (QTY)
CF-20-A-SMTR	20mm	10/100
CF-25-A-SMTR	25mm	10/100



TWIN THRU 'H' BOX - 4 WAY

ITEM CODE	SIZE	BOX/CTN (QTY)
CF-20-H-SMTR	20mm	10/100
CF-25-H-SMTR	25mm	10/100



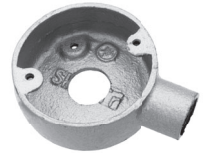
TEE BOX - 3 WAY

ITEM CODE	SIZE	BOX/CTN (QTY)
CF-20-3W-SMTR	20mm	10/100
CF-25-3W-SMTR	25mm	10/100



TERMINAL BOX - 1 WAY W/BACK HOLE

ITEM CODE	SIZE	BOX/CTN (QTY)
CF-20-1W-H-SMTR	20mm	10/100
CF-25-1W-H-SMTR	25mm	10/100



CROSS BOX - 4 WAY

ITEM CODE	SIZE	BOX/CTN (QTY)
CF-20-4W-SMTR	20mm	10/100
CF-25-4W-SMTR	25mm	10/100



BOX SIZE	BACK-HOLE DIAMETER
20mm	20mm
25mm	25mm

** Custom back outlet hole sizes are available upon request.

** Circular Boxes w/back outlet hole are also available in 2, 3, Angle & 4 Way Box upon request. (Made to order, MOQ and lead time apply)

BOXES WITH BACK OUTLET

ITEM CODE	SIZE	BOX/CTN (QTY)
CF-20-1W-BO-SMTR	20mm	10/100
CF-25-1W-BO-SMTR	25mm	10/100
CF-20-2W-BO-SMTR	20mm	10/100
CF-25-2W-BO-SMTR	25mm	10/100
CF-20-3W-BO-SMTR	20mm	10/100
CF-25-3W-BO-SMTR	25mm	10/100
CF-20-4W-BO-SMTR	20mm	10/100
CF-25-4W-BO-SMTR	25mm	10/100
CF-20-A-BO-SMTR	20mm	10/100
CF-25-A-BO-SMTR	25mm	10/100

SAMPLE OF 2 WAY BOX WITH BACK OUTLET



Marking : SMART[®]
Material : Malleable Iron – BS EN 61386-21:2004
Finishing : Hot-Dipped Galvanized in accordance with BS EN ISO 1461

Depth of Boxes:

- 20mm at min 25mm, tapped with M4 hole at 50.8mm centres
- 25mm at min 28mm, tapped with M4 hole at 50.8mm centres

Notes:

- Boxes include tapped hole at base for earthing screw
- Suitable for outdoor or high-humidity environments requiring corrosion protection
- Covers and M4 fixing screws are supplied separately
- Compatible with BS EN 61386 conduit systems

BRITISH STANDARD HOT-DIPPED GALVANIZED FITTINGS & ACCESSORIES

CLASS 4 LARGE CIRCULAR BOXES



TERMINAL BOX - 1 WAY

ITEM CODE	SIZE	BOX/CTN (QTY)
CF-32-1W-SMTR	32mm	5/25
**CF-38-1W-SMTR	38mm	5/25
**CF-50-1W-SMTR	50mm	5/25

**Oversize Boxes are available on special indent basis only.



THROUGH BOX - 2 WAY

ITEM CODE	SIZE	BOX/CTN (QTY)
CF-32-2W-SMTR	32mm	5/25
**CF-38-2W-SMTR	38mm	5/25
**CF-50-2W-SMTR	50mm	5/25

**Oversize Boxes are available on special indent basis only.



ANGLE BOX - 2 WAY

ITEM CODE	SIZE	BOX/CTN (QTY)
CF-32-A-SMTR	32mm	5/25
**CF-38-A-SMTR	38mm	5/25
**CF-50-A-SMTR	50mm	5/25

**Oversize Boxes are available on special indent basis only.



TEE BOX - 3 WAY

ITEM CODE	SIZE	BOX/CTN (QTY)
CF-32-3W-SMTR	32mm	5/25
**CF-38-3W-SMTR	38mm	5/25
**CF-50-3W-SMTR	50mm	5/25

**Oversize Boxes are available on special indent basis only.



CROSS BOX - 4 WAY

ITEM CODE	SIZE	BOX/CTN (QTY)
CF-32-4W-SMTR	32mm	5/25
**CF-38-4W-SMTR	38mm	5/25
**CF-50-4W-SMTR	50mm	5/25

**Oversize Boxes are available on special indent basis only.

Marking : SMART^{tr}
Material : Malleable Iron – BS EN 61386-21:2004
Finishing : Hot-Dipped Galvanized in accordance with BS EN ISO 1461

Notes:
- Boxes include tapped hole at base for earthing screw
- Suitable for outdoor or high-humidity environments requiring corrosion protection
- Covers and M4 fixing screws are supplied separately
- For 32mm size: Min 37.5mm deep, tapped M4 at 71.5mm centres
- Compatible with BS EN 61386 conduit systems

BRITISH STANDARD CONDUITS ELECTRO-GALVANIZED (PG)

CLASS 3 CONDUITS (BS EN 61386-21:2004)

CHARACTERISTICS & APPLICATIONS

- Supplied with one standard coupler per length
- Metric size threadings (Imperial sizes available upon request)
- Smooth interior for easy cable pulling
- Suitable for indoor use with lower levels of humidity
- 38MM/50MM conduits are also available; specifications available upon request



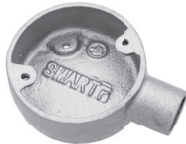
****Note:** BS 4568: Part 1:1970 and BS EN 50086-2-1:1996 have been officially withdrawn and superseded by BS EN 61386-21:2004.

NOMINAL SIZE	ITEM CODE	OUTSIDE DIAMETER	LENGTH W/O COUPLING	NO. OF LENGTHS PER BUNDLE	NO. OF BUNDLE PER LIFT	TOTAL LENGTHS PER LIFT
20mm	CP-20-3-SMTR	19.7mm – 20.0mm	3.75 Metres	10	20	200
25mm	CP-25-3-SMTR	24.6mm – 25.0mm	3.75 Metres	10	20	200
32mm	CP-32-3-SMTR	31.6mm – 32.0mm	3.75 Metres	5	20	100

CLASS 3 CIRCULAR BOXES

TERMINAL BOX - 1 WAY

ITEM CODE	SIZE	BOX/CTN (QTY)
CF-20-1W	20mm	10/100
CF-25-1W	25mm	10/100



TEE BOX - 3 WAY

ITEM CODE	SIZE	BOX/CTN (QTY)
CF-20-3W	20mm	10/100
CF-25-3W	25mm	10/100



THROUGH BOX - 2 WAY

ITEM CODE	SIZE	BOX/CTN (QTY)
CF-20-2W	20mm	10/100
CF-25-2W	25mm	10/100



CROSS BOX - 4 WAY

ITEM CODE	SIZE	BOX/CTN (QTY)
CF-20-4W	20mm	10/100
CF-25-4W	25mm	10/100



ANGLE BOX - 2 WAY

ITEM CODE	SIZE	BOX/CTN (QTY)
CF-20-A	20mm	10/100
CF-25-A	25mm	10/100



Depth of Boxes:

- 20mm at min 25mm, tapped with M4 hole at 50.8mm centres
- 25mm at min 28mm, tapped with M4 hole at 50.8mm centres

Notes:

- Boxes include tapped hole at base for earthing screw
- Suitable for indoor installations with lower humidity
- Covers and M4 fixing screws are supplied separately
- Compatible with BS EN 61386 conduit systems

Marking : SMART[®]
Material : Malleable Iron – BS EN 61386-21:2004
Finishing : Electro-Galvanized(PG)

BRITISH STANDARD EPOXY COATED CONDUITS & FITTINGS

EPOXY COATED CONDUITS (BS EN 61386-21:2004)

CHARACTERISTICS & APPLICATIONS FOR EPOXY POWDER COATED CONDUITS (CLASS 3 & 4)

- Additional epoxy powder coating provides heavy surface corrosion protection to conduits.
- Epoxy powder coated finishing offers excellent impact and scratch resistance.
- Bending of epoxy conduit is not recommended. In the event bending occurs, touch-up after bending is required.
- Helps reduce manpower cost compared to manual painting for epoxy conduits.
- Supplied both ends threaded with one standard socket on one end.
- Suitable for both indoor and outdoor applications.
- Available in various colours to differentiate types of M&E services or based on the architect's colour preferences.

****Note:** Colours quoted are based on client's specified colour code/sample and are supplied in bulk, subject to epoxy colour availability.

****MOQ:** 200 lengths for standard colours. Special colours are subject to re-quotation.

Standards	Size	Model No.	Length w/o Coupling	No. of Lengths per Bundle	Total Lengths per Lift
BS EN 61386 - 21 - 2004 (Class 3)	20mm	CP-20-E	3.75 metres	10	200
	25mm	CP-25-E	3.75 metres	10	200
	32mm	CP-32-E	3.75 metres	5	100
BS EN 61386 - 21 - 2004 (Class 4)	20mm	CP-20-4-E	3.75 metres	10	200
	25mm	CP-25-4-E	3.75 metres	10	200
	32mm	CP-32-4-E	3.75 metres	5	100
	38mm	CP-38-4-E	3.75 metres	5	50
	50mm	CP-50-4-E	3.75 metres	5	50



EPOXY COATED CIRCULAR BOXES & OTHERS

TERMINAL BOX - 1 WAY

ITEM CODE	SIZE	BOX/CTN (QTY)
CF-20-1W-E	20mm	10/100
CF-25-1W-E	25mm	10/100



TEE BOX - 3 WAY

ITEM CODE	SIZE	BOX/CTN (QTY)
CF-20-3W-E	20mm	10/100
CF-25-3W-E	25mm	10/100



THROUGH BOX - 2 WAY

ITEM CODE	SIZE	BOX/CTN (QTY)
CF-20-2W-E	20mm	10/100
CF-25-2W-E	25mm	10/100



CROSS BOX - 4 WAY

ITEM CODE	SIZE	BOX/CTN (QTY)
CF-20-4W-E	20mm	10/100
CF-25-4W-E	25mm	10/100



ANGLE BOX - 2 WAY

ITEM CODE	SIZE	BOX/CTN (QTY)
CF-20-A-E	20mm	10/100
CF-25-A-E	25mm	10/100



SPACER BAR SADDLE

ITEM CODE	SIZE	BOX/CTN (QTY)
CF-20-SB-E	20mm	10/1000
CF-25-SB-E	25mm	10/1000

* Steel Screws included. (Optional for Brass/ Stainless Steel Screws)



Marking: SMARTr
Material: Steel
Finishing: Epoxy Coated
Standard: BS EN 61386-21:2004

COUPLING

ITEM CODE	SIZE	BOX/CTN (QTY)
CF-20-S-E	20mm	10/1000
CF-25-S-E	25mm	10/500



BRITISH STANDARD FITTINGS & ACCESSORIES

FITTINGS & ACCESSORIES

LOOPING BOX

ITEM CODE	SIZE	BOX/CTN (QTY)
CF-LP-SMTR	-	10/100

Marking: No
Material: Malleable Iron
Finishing: Hot-Dipped Galvanized
 * Available for 20/25mm Back Hole upon request.



EXTENSION RING

ITEM CODE	SIZE	BOX/CTN (QTY)
CF-38-ER	38mm	10/100

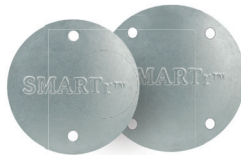
Marking: No
Material: Malleable Iron
Finishing: Hot-Dipped Galvanized
 * Available in steel material upon request.
 * Supplied with 50mm fixing centre holes.
 * Used to convert standard circular boxes into deep pattern versions.



COVERS

CIRCULAR COVER — HDG

ITEM CODE	SIZE	BOX/CTN (QTY)
CF-C-SMTR	20mm/25mm	5/100
CF-C-32	32mm	4/100



CIRCULAR COVER — G.I.

ITEM CODE	SIZE	BOX/CTN (QTY)
CF-C	20mm/25mm	5/100

Marking: SMART[®]
Material: Steel
Finishing: Hot-Dipped Galvanized/ Electro-Galvanized(PG)
Thickness: 1mm / 2mm
 * Use with compatible Rubber Gasket is recommended for optimal results.

RUBBER GASKET

ITEM CODE	SIZE	BOX/CTN (QTY)
CF-GASKET	20mm/25mm	10/1000



DOME LID

ITEM CODE	SIZE	BOX/CTN (QTY)
CF-DC-20-SMTR	20mm	10/200
CF-DC-25-SMTR	25mm	10/200

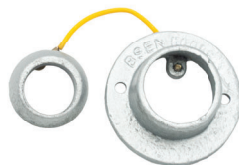
Marking: SMART[®]
Material: Malleable Iron
Finishing: Hot-Dipped Galvanized
 * Mounting Holes 50.5mm fixing centre use.
 for connecting flexible adaptors, hanging light fittings, etc.
 ** Available in Steel. (Made to order, MOQ and lead time apply)



BALL & SOCKET

ITEM CODE	SIZE	BOX/CTN (QTY)
CF-20-BSC-HDG	20mm	10/200
CF-25-BSC-HDG	25mm	10/200

Marking: BS EN 61386
Material: Malleable Iron
Finishing: Hot-Dipped Galvanized
 * Supplied with 50.5mm fixing centre holes with attached earth wire.
 ** Available in Steel. (Made to order, MOQ and lead time apply)



INSPECTION & BENDING FITTINGS

INSPECTION ELBOW

ITEM CODE	SIZE	BOX/CTN (QTY)
CF-20-IE-SMTR	20mm	10/200
CF-25-IE-SMTR	25mm	10/200
CF-32-IE-SMTR	32mm	10/100

Marking: SMART[®]
Material: Malleable Iron
Finishing: Hot-Dipped Galvanized
 * Lid and Steel Screws included.



INSPECTION TEE

ITEM CODE	SIZE	BOX/CTN (QTY)
CF-20-IT-SMTR	20mm	10/100
CF-25-IT-SMTR	25mm	10/100
CF-32-IT-SMTR	32mm	TBA

Marking: SMART[®]
Material: Malleable Iron
Finishing: Hot-Dipped Galvanized
 * Lid and Steel Screws included.



BRITISH STANDARD FITTINGS & ACCESSORIES

INSPECTION & BENDING FITTINGS



INSPECTION BEND

ITEM CODE	SIZE	BOX/CTN (QTY)
CF-20-IB-SMTR	20mm	10/200
CF-25-IB-SMTR	25mm	10/100
CF-32-IB-SMTR	32mm	10/50

Marking: SMARTr
Material: Malleable Iron
Finishing: Hot-Dipped Galvanized
* Lid and Steel Screws included.



SOLID BEND

ITEM CODE	SIZE	BOX/CTN (QTY)
CF-20-BEND-SMTR	20mm	10/100
CF-25-BEND-SMTR	25mm	10/100
CF-32-BEND-SMTR	32mm	10/50

Marking: SMARTr
Material: Malleable Iron
Finishing: Hot-Dipped Galvanized
* Angle: 90°, Supplied with Internal Threaded.



SOLID LONG BEND

ITEM CODE	SIZE	BOX/CTN (QTY)
CF-20-LB-SMTR	20mm	10/100
CF-25-LB-SMTR	25mm	10/100
CF-32-LB-SMTR	32mm	10/50

**CF-38-LB-SMTR 38mm TBA
**CF-50-LB-SMTR 50mm TBA

Marking: No
Material: Steel
Finishing: Hot-Dipped Galvanized
* Angle: 90°, Supplied with Internal Threaded.
** Custom Solid Long Bend are available upon request.
(Made to order, MOQ and lead time apply.)

COUPLINGS

COUPLING — HDG

ITEM CODE	SIZE	BOX/CTN (QTY)
CF-20-S-SMTR	20mm	10/1000
CF-25-S-SMTR	25mm	10/500
CF-32-S-SMTR	32mm	10/400
**CF-38-S-SMTR	38mm	TBA
**CF-50-S-SMTR	50mm	TBA

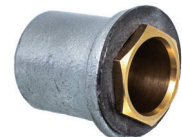
** Made to order, MOQ and lead time apply.



FLANGE COUPLING

ITEM CODE	SIZE	BOX/CTN (QTY)
CF-20-FC	20mm	10/250
CF-25-FC	25mm	10/250
CF-32-FC	32mm	10/150

Marking: No, Material: Malleable Iron/Steel
Finishing: Hot-Dipped Galvanized
* Complete with washer and male brush.



COUPLING — G.I.

ITEM CODE	SIZE	BOX/CTN (QTY)
CF-20-S-GI	20mm	10/1000
CF-25-S-GI	25mm	10/500
CF-32-S-GI	32mm	10/400

Marking: No, Material: Steel, Finishing: Hot-Dipped Galvanized/ Electro-Galvanized(PG)

EXPANSION COUPLER

ITEM CODE	SIZE	BOX/CTN (QTY)
CF-20-S-EX	20mm	10/500
CF-25-S-EX	25mm	10/500
CF-32-S-EX	32mm	10/300

Marking: No, Material: Steel, Finishing: Electro-Galvanized(PG)
* Supplied internal one end threaded and other end plain unthreaded to allow for expansion.



SCREWLESS COUPLING

ITEM CODE	SIZE	BOX/CTN (QTY)
CF-20-SC	20mm	10/600
CF-25-SC	25mm	10/500
CF-32-SC	32mm	10/300

Marking: No, Material: Steel, Finishing: Electro-Galvanized(PG)
* Supplied with Standard Steel Screws.
* Brass or Standard Steel Screws are optional.
* Most suitable for connection of P.V.C Conduit to Steel Conduit.
* Hot-Dipped Galvanized available upon request.
(Made to order, MOQ and lead time apply)



SHORT NIPPLE

ITEM CODE	SIZE	BOX/CTN (QTY)
CF-20-SN	20mm	10/1000
CF-25-SN	25mm	10/500

Marking: No, Material: Steel, Finishing: Electro-Galvanized(PG)
** Larger sizes or long nipples are available upon request.
(Made to order, MOQ and lead time apply)



BRITISH STANDARD CONDUIT FIXING

CONDUIT FIXINGS

SPACER BAR SADDLE — HDG

ITEM CODE	SIZE	BOX/CTN (QTY)
CF-20-SB-SMTR	20mm	10/1000
CF-25-SB-SMTR	25mm	10/1000
CF-32-SB-SMTR	32mm	10/500
CF-38-SB-SMTR	38mm	10/400
CF-50-SB-SMTR	50mm	10/250



SPACER BAR SADDLE — G.I.

ITEM CODE	SIZE	BOX/CTN (QTY)
CF-20-SB	20mm	10/1000
CF-25-SB	25mm	10/1000
CF-32-SB	32mm	10/500



Marking: SMART

Material: Steel

Finishing: Hot-Dipped Galvanized/ Electro-Galvanized(PG)

Standard: BS EN 61386-21:2004

* Steel Screws included.

(Optional for Brass / Stainless Steel Screws)

HALF SADDLE

ITEM CODE	SIZE	BOX/CTN (QTY)
CF-34-HS	20mm	5/2000
CF-1-HS	25mm	5/2000
CF-32-HS	32mm	10/1000



Marking: SMART

Material: Steel

Finishing: Electro-Galvanized(PG)

* Suitable for temporary installation of conduits / flexible conduit.

** Special size for Flexible Conduit available to order.

(Made to order, MOQ and lead time apply)

CONDUIT PIPE CLAMP

ITEM CODE	SIZE	BOX/CTN (QTY)
SSA-COND CLAMP-20	20mm	20/500
SSA-COND CLAMP-25	25mm	20/500
SSA-COND CLAMP-32	32mm	20/500
SSA-COND CLAMP-38	38mm	20/300
SSA-COND CLAMP-50	50mm	TBA
SSA-COND CLAMP-100	100mm	TBA
SSA-COND CLAMP-150	150mm	TBA



Marking: SMART

Material: Steel (Also available in Stainless Steel)

Finishing: Hot-Dipped Galvanized

* Screws included (Optional for Brass/ Steel/ Stainless Steel Screws)

* Larger Sizes available to order. (Made to order, MOQ and lead time apply)

HEAVY DUTY — DISTANCE SADDLE

ITEM CODE	SIZE	BOX/CTN (QTY)
CF-20-DS-SMTR	20mm	10/500
CF-25-DS-SMTR	25mm	5/250
CF-32-DS-SMTR	32mm	10/200



Marking: SMART

Material: Base - Malleable Iron

Finishing: Hot-Dipped Galvanized

* Steel Screws included.

(Optional for Brass/ Stainless Steel Screws)

* Spacing distance - 5mm

PLAIN SADDLE

ITEM CODE	SIZE	BOX/CTN (QTY)
CF-20-PS-SMTR	20mm	5/2000
CF-25-PS-SMTR	25mm	5/2000
CF-32-PS-SMTR	32mm	10/1000



Marking: SMART

Material: Steel

Finishing: Electro-Galvanized(PG)

** Larger sizes available to order. (MOQ and lead time apply)

** Hot-Dip Galvanized version available to order.

(Made to order, MOQ and lead time apply)

PIPE HANGER

ITEM CODE	SIZE	BOX/CTN (QTY)
SSA-PIPE HANGER 20MM	20mm	400
SSA-PIPE HANGER 25MM	25mm	350
SSA-PIPE HANGER 32MM	32mm	300
SSA-PIPE HANGER 38MM	38mm	TBA
SSA-PIPE HANGER 50MM	50mm	TBA



Marking: No

Material: Steel

Finishing: Hot-Dipped Galvanized

KON CLIP

ITEM CODE	SIZE	BOX/CTN (QTY)
CF-KC-20	20mm	20/800
CF-KC-25	25mm	20/800
CF-KC-32	32mm	20/600

Marking: No

Material: Steel

Finishing: Hot-Dipped Galvanized

* For installing conduit or cable onto threaded rod.



BRITISH STANDARD CONDUIT FIXINGS

REDUCERS / PLUGS

CONDUIT PIPE REDUCER

BRASS TINNED

ITEM CODE	SIZE	BOX/CTN (QTY)
CF-R-20X25	20mm x 25mm	20/1000
CF-R-32X25	25mm x 32mm	20/500

BRASS

ITEM CODE	SIZE	BOX/CTN (QTY)
CF-R-20X25-B	20mm x 25mm	20/1000
CF-R-32X25-B	25mm x 32mm	20/500

Marking: No
Material: Alloy / Brass
Finishing: Electro-Galvanized(PG) / Plain
* For conduit size reducing.
** Other sizes are available for order.
(Made to order, MOQ and lead time apply)



STOPPING PLUG

ITEM CODE	SIZE	BOX/CTN (QTY)
CF-SP-20	20mm	10/1000
CF-SP-25	25mm	10/1000
CF-SP-32	32mm	5/250

Marking: No
Material: Alloy / Brass
Finishing: Tinned / Plain
* Hexagonal/ Slotted Head Stop Plug used to seal off unused conduit entries on junction boxes.
** Other sizes are available for order, MOQ and lead time apply.



BUSHINGS

SHORT MALE BUSH

ITEM CODE	SIZE	BOX/CTN (QTY)
BF-MB-20-N	20mm	20/2000
BF-MB-25-N	25mm	20/2000
BF-MB-32-N	32mm	20/1000
BF-MB-38-N	38mm	TBA
BF-MB-50-N	50mm	TBA
BF-MB-2-N	2"	TBA

Marking: No
Material: Brass
Finishing: Plain



SHORT FEMALE BUSH

ITEM CODE	SIZE	BOX/CTN (QTY)
BF-FB-20-N	20mm	20/2000
BF-FB-25-N	25mm	20/2000
BF-FB-32-N	32mm	20/1000
BF-FB-38-N	38mm	TBA
BF-FB-50-N	50mm	TBA

Marking: No
Material: Brass
Finishing: Plain



LONG MALE BUSH

ITEM CODE	SIZE	BOX/CTN (QTY)
BF-MB-20-L	20mm	20/2000
BF-MB-25-L	25mm	20/1000
BF-MB-32-L	32mm	TBA
BF-MB-38-L	38mm	TBA
BF-MB-50-L	50mm	TBA

Marking: No
Material: Brass
Finishing: Plain



LOCKNUTS

LOCKING RING

ITEM CODE	SIZE	BOX/CTN (QTY)
CF-20-LR	20mm	20/5000
CF-25-LR	25mm	20/3000

Marking: No
Material: Steel
Finishing: Electro-Galvanized(PG)
* For locking conduit to junction boxes



LOCKNUT

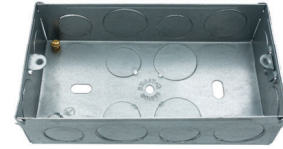
ITEM CODE	SIZE	BOX/CTN (QTY)
STEEL	BRASS	
CF-20-LN	BF-LN-20	20mm 20/5000
CF-25-LN	BF-LN-25	25mm 20/3000
CF-32-LN	BF-LN-32	32mm 20/2000

Marking: No
Material: Steel / Brass
Finishing: Electro-Galvanized(PG) / Plain
* For locking conduit to junction boxes.
* Available in Tinned Finish.



BRITISH STANDARD SWITCH & SOCKET BOXES / ADAPTABLE BOXES

KNOCK-OUT BOXES (SWITCH & SOCKET BOXES)



1 GANG K.O. BOX

ITEM CODE	TYPE	SIZE	THICKNESS (mm)
KO-1	NORMAL	75(W) X 75(L) X 35(D)	1.1 ~ 1.2
KO-1-S-D	DEEP	75(W) X 75(L) X 47(D)	1.1 ~ 1.2
KO-1-S	NORMAL	75(W) X 75(L) X 35(D)	0.8 ~ 0.9

HDG Available Only

KO-1-SMTR-HDG	NORMAL	75(W) X 75(L) X 35(D)	1.1 ~ 1.2
---------------	--------	-----------------------	-----------

Marking: SMART

Material: Steel

Finishing: Electro-Galvanized(PG)/
Hot-Dipped Galvanized

Standard: BS 4662

Note:

- Knock-out holes available in mixed 20mm & 25mm sizes
- 1 adjustable lug
- 1 regulation earth terminal
- 2 adjustable lugs are available upon request

2 GANG K.O. BOX

ITEM CODE	TYPE	SIZE	THICKNESS (mm)
KO-2	NORMAL	135(W) X 75(L) X 35(D)	1.1 ~ 1.2
KO-2-S-D	DEEP	135(W) X 75(L) X 47(D)	1.1 ~ 1.2
KO-2-S	NORMAL	135(W) X 75(L) X 35(D)	0.8 ~ 0.9

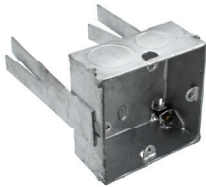
HDG Available Only

KO-2-SMTR-HDG	NORMAL	135(W) X 75(L) X 35(D)	1.1 ~ 1.2
---------------	--------	------------------------	-----------

- Plain lids available for order, MOQ and lead time apply.
- 1 GANG K.O. BOX 100 pcs / carton
- 2 GANG K.O. BOX 50 pcs / carton

KNOCK-OUT BOXES WITH "FISH TAIL"

These boxes are designed with sets of "Fish Tails" welded to the boxes to withstand heavy duty areas like tunnels and civil defence bomb shelters amongst other applications.



1 GANG K.O. BOX - WITH "FISH TAIL"

ITEM CODE	TYPE	SIZE	THICKNESS (mm)
KO-1-SMTR-FT	NORMAL	75(W) X 75(L) X 35(D)	Min 1.1

Marking: SMART

Material: Steel

Finishing: Hot-Dipped Galvanized

Standard: BS 4662

Note:

- 1 x fixed regulation earth terminal
- 8 x 20mm K.O. holes
- Supplied with 2x welded fish tails
- 100 pcs / carton
- Plain lids available for order, MOQ and lead time apply.

2 GANG K.O. BOX - WITH "FISH TAIL"

ITEM CODE	TYPE	SIZE	THICKNESS (mm)
KO-2-SMTR-FT	NORMAL	135(W) X 75(L) X 35(D)	Min 1.1

Marking: SMART

Material: Steel

Finishing: Hot-Dipped Galvanized

Standard: BS 4662

Note:

- 1 x fixed regulation earth terminal
- 10 x 20mm K.O. holes
- Supplied with 4x welded fish tails
- 50 pcs / carton
- Plain lids available for order, MOQ and lead time apply.

STEEL ADAPTABLE BOXES

SMART heavy duty adaptable boxes can be used as a junction box for installation with electrical conduits ranging from 20mm up to 150mm diameter. Boxes are supplied without knock out holes to allow users to drill the required holes according to installation needs. The boxes can be supplied with a rubber gasket to improve IP rating to IP54. It could also serve as a utility junction box for wiring connection purposes.

ITEM CODE	SIZE	BOX/CTN (QTY)
**CF-AD-75X75	75(W) X 75(L) X 35(D)	50
CF-AD-100X100X50	100(W) X 100(L) X 50(D)	50
CF-AD-100X100X75	100(W) X 100(L) X 75(D)	40
CF-AD-150X150	150(W) X 150(L) X 75(D)	20
CF-AD-225X225	225(W) X 225(L) X 75(D)	10
**CF-AD-300X300	300(W) X 300(L) X 75(D)	5

** Made to order, MOQ and lead time apply.

BODY

Material: Steel, Malleable Iron, Stainless Steel (Optional)

Finishing: Hot-Dipped Galvanized

FLAT LID

Material: Steel

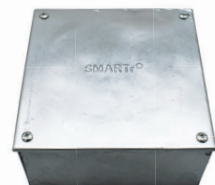
Finishing: Hot-Dipped Galvanized

Marking: SMART

IP Rating: IP40 / IP54

Note:

- Supplied with steel screws as standard
- Brass or stainless steel screws are optional
- Boxes are supplied plain without K.O. holes
- Knock-out hole punching available upon request with client-specified dimensions
- Other sizes available for order, MOQ and lead time apply.



BRITISH STANDARD FLEXIBLE CONDUIT SYSTEMS

PVC COATED G.I. FLEXIBLE CONDUITS



STANDARD SELECTION CHART 1

SIZE	ITEM CODE	PACKING	O.D.	COMPATIBLE WITH ADAPTOR'S CODE
16mm	FP-16-PC-SMTR	100FT	19.7 ± 0.35 mm	BF-FA BF-FA-WT BF-FA-T FA-WT FFA-WT
20mm	FP-20-PC-SMTR	100FT	23.5 ± 0.35 mm	
25mm	FP-25-PC-SMTR	100FT	28.5 ± 0.40 mm	
32mm	FP-32-PC-SMTR	100FT	37.0 ± 0.40 mm	
38mm	FP-38-PC-SMTR	50FT	43.7 ± 0.50 mm	
50mm	FP-50-PC-SMTR	50FT	55.8 ± 0.50 mm	

Flexible Material : Electro-Galvanized(PG) Steel
Jacket Properties : Heat-retardant, self-extinguishing PVC Sheath
PVC Color : Black (White, Grey, and other colors available upon request)
Temperature Range : -25°C to +120°C
IP Rating : IP65 (when installed with suitable water tight adaptors)
Construction : Galvanized steel core with enhanced low-acid PVC Sheath
Features : Highly flexible
Standard : BS 61386 (where applicable)

****Note:** - BS 731 and BS EN 50086 have been officially withdrawn and superseded by BS EN 61386.
 - Imperial sizes are available upon request. (Made to order, MOQ and lead time apply)

STANDARD SELECTION CHART 2

SIZE	ITEM CODE	PACKING	O.D.	COMPATIBLE WITH ADAPTOR'S CODE
20mm	FP-20OD-PC-ME	100FT	19.7 ± 0.35 mm	BF-FA BF-FA-WT BF-FA-T FA-WT FFA-WT
25mm	FP-25OD-PC-ME	100FT	23.5 ± 0.35 mm	
32mm	FP-32OD-PC-ME	100FT	28.5 ± 0.40 mm	

Flexible Material : Electro-Galvanized(PG) Steel
Jacket Properties : Heat-retardant, self-extinguishing PVC Sheath
PVC Color : Black (White, Grey, and other colors available upon request)
Temperature Range : -25°C to +120°C
IP Rating : IP65 (when installed with suitable water tight adaptors)
Construction : Galvanized steel core with enhanced low-acid PVC Sheath
Features : Highly flexible
Standard : BS 61386 (where applicable)

****Note:** - BS 731 and BS EN 50086 have been officially withdrawn and superseded by BS EN 61386.
 - Imperial sizes are available upon request. (Made to order, MOQ and lead time apply)

STEEL FLEXIBLE CONDUITS



Flexible Material : Electro-Galvanized(PG) Steel
Properties : Provides strong protection for cables
Temp range : -50°C to +500°C
IP Rating : IP40
Construction : Highly flexible steel conduit offers excellent mechanical protection
Features : Ideal for general wiring installations and provides good flexible bending and vibration applications
Standard : BS 61386 (where applicable)

****Note:** BS 731 and BS EN 50086 have been officially withdrawn and superseded by BS EN 61386.

STANDARD SELECTION CHART

SIZE	ITEM CODE	PACKING PER COIL	O.D.	COMPATIBLE WITH ADAPTOR'S CODE
5/8" (16mm)	FP-58-S-SMTR	50FT	19.0 ± 0.35 mm	BF-FA
3/4" (20mm)	FP-34-S-SMTR	50FT	22.8 ± 0.35 mm	
1" (25mm)	FP-1-S-SMTR	50FT	28.0 ± 0.40 mm	
1 1/4" (32mm)	FP-114-S-SMTR	100FT	36.0 ± 0.40 mm	
1 1/2" (38mm)	FP-112-S-SMTR	50FT	42.5 ± 0.50 mm	
2" (50mm)	FP-2-S-SMTR	50FT	54.5 ± 0.50 mm	

BRITISH STANDARD FLEXIBLE CONDUIT SYSTEMS

LOW SMOKE ZERO HALOGEN (LSOH) COATED FLEXIBLE CONDUITS



STANDARD SELECTION CHART

SIZE	ITEM CODE	PACKING	O.D.	COMPATIBLE WITH ADAPTOR'S CODE
16mm	FP-16-LSZH-SMTR	100FT	19.8 ± 0.35 mm	BF-FA-WT BF-FA-T FA-WT FFA-WT
20mm	FP-20-LSZH-SMTR	100FT	23.6 ± 0.35 mm	
25mm	FP-25-LSZH-SMTR	100FT	29.0 ± 0.40 mm	
32mm	FP-32-LSZH-SMTR	100FT	37.2 ± 0.40 mm	
38mm	FP-38-LSZH-SMTR	50FT	43.9 ± 0.50 mm	
50mm	FP-50-LSZH-SMTR	50FT	56.0 ± 0.50 mm	

Flexible Material : Electro-Galvanized(PG) Steel
Jacket Properties : Heat-resistant, Low Smoke Halogen-free
PVC Color : Black
Tem. Range : -25°C to +120°C
IP Rating : IP65 (when installed with suitable water tight adaptors)
Construction : Flexible steel core with LSOH PVC sheath
Features : Emits no hazardous gases when exposed to heat or flame, Suitable for enclosed or sensitive environments
Standard : BS EN 61386 (where applicable)

****Note:** - BS 731 and BS EN 50086 have been officially withdrawn and superseded by BS EN 61386.
 - Imperial sizes are available upon request. (Made to order, MOQ and lead time apply)

LIQUID TIGHT FLEXIBLE CONDUITS



STANDARD SELECTION CHART

SIZE	ITEM CODE	PACKING	O.D.	COMPATIBLE WITH ADAPTOR'S CODE
16mm	FP-16-PC-WT-SMTR	100FT	22.0 ± 0.45 mm	BF-FA-WT FA-WT FFA-WT
20mm	FP-20-PC-WT-SMTR	100FT	26.7 ± 0.50 mm	
25mm	FP-25-PC-WT-SMTR	100FT	31.9 ± 0.50 mm	
32mm	FP-32-PC-WT-SMTR	100FT	40.6 ± 0.60 mm	
38mm	FP-38-PC-WT-SMTR	50FT	47.0 ± 0.70 mm	
50mm	FP-50-PC-WT-SMTR	50FT	59.0 ± 0.70 mm	

Flexible Material : Electro-Galvanized(PG) Steel
Jacket Properties : Excellent mechanical strength with flexible capabilities, Thick PVC jacket resistant to oil, acid, and sea water
PVC Color : Black (Grey available upon request)
Temperature Range : -25°C to +150°C
IP Rating : IP65 (when installed with suitable water tight adaptors)
Standard : BS EN 61386 (where applicable)

****Note:** - BS 731 and BS EN 50086 have been officially withdrawn and superseded by BS EN 61386.
 - Imperial sizes are available upon request. (Made to order, MOQ and lead time apply)

SPACING SUPPORT FOR FLEXIBLE CONDUITS (GUIDANCE)

NOMINAL CONDUIT SIZE (mm)	MAXIMUM SPACING BETWEEN SUPPORTS	
	HORIZONTAL RUNS (m)	VERTICAL RUNS (m)
≤16	0.3	0.5
17-25	0.4	0.6
26-40	0.6	0.8
Over 40	0.8	1.0

Support Spacing Guidelines for Flexible Conduits
 The table provides recommended maximum distances between supports for flexible conduits during installation. As per the 16th Edition of the I.E.E. Wiring Regulations, flexible conduits must not be used as a protective conductor.

BRITISH STANDARD FLEXIBLE CONDUIT ADAPTORS

FLEXIBLE CONDUIT ADAPTORS



FLEXIBLE ADAPTOR WITH RETAINING SCREW (BF-FA)

ITEM CODE	SIZE	CTN (QTY)
BF-FA-20X58	20mm x 16mm	1000
BF-FA-20X20	20mm x 20mm	1000
BF-FA-25X20	20mm x 25mm	500
BF-FA-25X1	25mm x 25mm	500
BF-FA-32X32	32mm x 32mm	400
BF-FA-2X2	2" x 2"	80

Marking: No
Material: Brass
Finishing: Plain
IP Rating: IP40

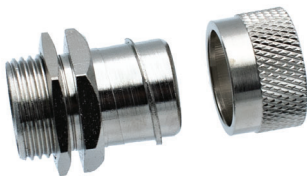
**Nickel Plate available for order, MOQ and lead time apply.



FEMALE ADAPTOR (BF-FFA)

ITEM CODE	SIZE	CTN (QTY)
BF-FFA-20X20	20mm x 20mm	500
BF-FFA-25X1	25mm x 25mm	500

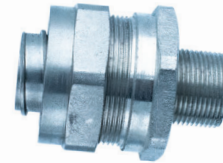
Marking: No
Material: Brass
Finishing: Plain
IP Rating: IP40



NICKEL PLATED ADAPTOR - 2PCS MALE ADAPTOR (BF-FA-T)

ITEM CODE	SIZE	CTN (QTY)
BF-FA-20-T	20mm x 16mm	500
BF-FA-20X20-T	20mm x 20mm	500
BF-FA-25-T	25mm x 20mm	500
BF-FA-25X25-T	25mm x 25mm	300
BF-FA-32X32-T	32mm x 32mm	200

Marking: No, Material: Brass, Finishing: Nickel Plate, IP Rating: IP40
**Female Adaptor available for order, MOQ and lead time apply.



LIQUID/WATER TIGHT NICKEL PLATED 2 PART BRASS MALE ADAPTOR - HEAVY GAUGE (BF-FA-WT)

ITEM CODE	SIZE	CTN (QTY)
BF-FA-20X20-WT	20mm x 20mm	120
BF-FA-25X25-WT	25mm x 25mm	80
BF-FA-32X32-WT	32mm x 32mm	60
BF-FA-38X38-WT	38mm x 38mm	20
BF-FA-50X50-WT	50mm x 50mm	20

Marking: No
Material: Brass
Finishing: Nickel Plate
IP Rating: IP65

**Female Adaptor available for order, MOQ and lead time apply.



LIQUID/WATER TIGHT MALE ADAPTOR (FA-WT)

ITEM CODE	SIZE	CTN (QTY)
FA-WT-20X16	20mm x 16mm	500
FA-WT-20X20	20mm x 20mm	500
FA-WT-25X20	25mm x 20mm	500
FA-WT-25X25	25mm x 25mm	300
FA-WT-32X32	32mm x 32mm	200
FA-WT-38X38	38mm x 38mm	TBA

Marking: SMARTr, Material: Steel / Alloy, Finishing: Galvanized, IP Rating: IP65
**Angle Adaptor available for order. (Made to order, MOQ and lead time apply)



LIQUID/WATER TIGHT FEMALE ADAPTOR (FFA-WT)

ITEM CODE	SIZE	CTN (QTY)
**FFA-WT-20X16	20mm x 16mm	500
**FFA-WT-20X20	20mm x 20mm	500
**FFA-WT-25X20	25mm x 20mm	500
**FFA-WT-25X25	25mm x 25mm	300
**FFA-WT-32X32	32mm x 32mm	200
**FFA-WT-38X38	38mm x 38mm	TBA

Marking: SMARTr, Material: Steel / Alloy, Finishing: Galvanized, IP Rating: IP65
**Made to order, MOQ and lead time apply.

BRITISH STANDARD STAINLESS STEEL CONDUIT SYSTEMS

STAINLESS STEEL CONDUITS (BS EN 61386-21:2004)

CHARACTERISTICS & APPLICATIONS

- Manufactured from corrosion-resistant 316L stainless steel
- High durability and long-lasting performance
- ISO form threading for secure and precise installation
- Waterproof and chemical-resistant conduit body
- Smooth internal bore for effortless cable pulling
- Suitable for high-humidity, harsh, or outdoor environments
- Available in 20MM/25MM; larger sizes are available upon request



NOMINAL SIZE	ITEM CODE	OUTSIDE DIAMETER	LENGTH W/O COUPLING	NO. OF LENGTHS PER BUNDLE	NO. OF BUNDLE PER LIFT	TOTAL LENGTHS PER LIFT
20mm	CP-20-SS-SMTR	19.7mm – 20.0mm	3 Metres	10	20	200
25mm	CP-25-SS-SMTR	24.6mm – 25.0mm	3 Metres	10	20	200

Complies with BS EN 61386 Part 1 / Part 21 / Part 25 for conduit systems for cable management
ISO Form 1.5MM pitch
Material: 316L Stainless Steel (also available in SS304 / SS316)

CIRCULAR BOXES

TERMINAL BOX - 1 WAY

ITEM CODE	SIZE	BOX/CTN (QTY)
CF-20-1W-SS-SMTR	20mm	10/100
CF-25-1W-SS-SMTR	25mm	10/100



TEE BOX - 3 WAY

ITEM CODE	SIZE	BOX/CTN (QTY)
CF-20-3W-SS-SMTR	20mm	10/100
CF-25-3W-SS-SMTR	25mm	10/100



THROUGH BOX - 2 WAY

ITEM CODE	SIZE	BOX/CTN (QTY)
CF-20-2W-SS-SMTR	20mm	10/100
CF-25-2W-SS-SMTR	25mm	10/100



CROSS BOX - 4 WAY

ITEM CODE	SIZE	BOX/CTN (QTY)
CF-20-4W-SS-SMTR	20mm	10/100
CF-25-4W-SS-SMTR	25mm	10/100



ANGLE BOX - 2 WAY

ITEM CODE	SIZE	BOX/CTN (QTY)
CF-20-A-SS-SMTR	20mm	10/100
CF-25-A-SS-SMTR	25mm	10/100



Depth of Boxes:

- 20mm at min 25mm, tapped with M4 hole at 50.8mm centres
- 25mm at min 28mm, tapped with M4 hole at 50.8mm centres

Notes:

- Boxes include tapped hole at base for earthing screw
- Designed for indoor and outdoor applications requiring high corrosion resistance
- Covers and M4 fixing screws are INCLUDED
- Compatible with BS EN 61386 conduit systems
- For 32mm size: Min 37.5mm deep, tapped M4 at 71.5mm centres
- Manufactured using SS316L stainless steel for superior durability and long service life

Marking : SMARTr
Material : 316L Stainless Steel (also available in SS304 / SS316)
Finishing : Plain
Standard : BS EN 61386-21:2004

BRITISH STANDARD STAINLESS STEEL CONDUIT FITTINGS & FIXINGS ACCESSORIES

CONDUIT FITTINGS & FIXINGS ACCESSORIES

DOME LID

ITEM CODE	SIZE	BOX/CTN (QTY)
CF-DC-20-SS-SMTR	20mm	10/200
CF-DC-25-SS-SMTR	25mm	10/200

Marking: No
Material: Stainless Steel
Finishing: Plain
* Mounting Holes 50.5mm fixing centre use
for connecting flexible adaptors, hanging light fittings, etc.



MALE BUSH

ITEM CODE	SIZE	BOX/CTN (QTY)
CF-MB-20-SS	20mm	20/2000
CF-MB-25-SS	25mm	20/2000

Marking: No
Material: Stainless Steel
Finishing: Plain



SPACER BAR SADDLE

ITEM CODE	SIZE	BOX/CTN (QTY)
CF-20-SB-SS	20mm	10/1000
CF-25-SB-SS	25mm	10/1000

Marking: No
Material: Stainless Steel
Finishing: Plain
Standard: BS EN 61386-21:2004
* Stainless Steel Screws Included.



DISTANCE SADDLE

ITEM CODE	SIZE	BOX/CTN (QTY)
CF-20-DS-SS-SMTR	20mm	10/500
CF-25-DS-SS-SMTR	25mm	5/250

Marking: No
Material: Stainless Steel
Finishing: Plain
* Stainless Steel Screws Included.
* Spacing distance - 5mm



HEX LOCKNUT

ITEM CODE	SIZE	BOX/CTN (QTY)
CF-20-LN-SMTR	20mm	20/5000
CF-25-LN-SMTR	25mm	20/3000

Marking: No
Material: Stainless Steel
Finishing: Plain
* For locking conduit to junction boxes.



COUPLING

ITEM CODE	SIZE	BOX/CTN (QTY)
CF-20-S-SS	20mm	10/1000
CF-25-S-SS	25mm	10/500

Marking: No
Material: Stainless Steel
Finishing: Plain
* Angle: 90°, Supplied with Internal Threaded.
* Supplied with external threaded c/w socket.
** Custom bend angles are available upon request.
(Made to order, MOQ and lead time apply)



SOLID BEND

ITEM CODE	SIZE	BOX/CTN (QTY)
CF-20-BEND-SS-SMTR	20mm	10/100
CF-25-BEND-SS-SMTR	25mm	10/100

Marking: No
Material: Stainless Steel
Finishing: Plain
* Angle: 90°, Supplied with Internal Threaded.
* Supplied with external threaded c/w socket.
** Custom bend angles are available upon request.
(Made to order, MOQ and lead time apply)



CONDUIT PIPE CLAMP

ITEM CODE	SIZE	BOX/CTN (QTY)
SSA-COND CLAMP-20-SS	20mm	20/500
SSA-COND CLAMP-25-SS	25mm	20/500

Marking: No
Material: Stainless Steel
Finishing: Plain
* Screws included.
** Larger Sizes available to order.
(Made to order, MOQ and lead time apply)



BRITISH STANDARD STAINLESS STEEL ADAPTABLE BOXES & FLEXIBLE CONDUIT SYSTEMS

STAINLESS STEEL ADAPTABLE BOXES

SMART stainless steel adaptable boxes are designed for high-corrosion environments and can be used as junction boxes in electrical conduit systems ranging from 20mm up to 150mm diameter. Boxes are supplied without knock-out holes to allow users to drill the required holes according to installation needs. Rubber gasket options are available to improve the IP rating up to IP54. These boxes are ideal for both indoor and outdoor environments, offering enhanced durability and rust resistance.

ITEM CODE	SIZE	BOX/CTN (QTY)
**CF-AD-75X75-SS	75(W) X 75(L) X 35(D)	50
**CF-AD-100X100X50-SS	100(W) X 100(L) X 50(D)	50
**CF-AD-100X100X75-SS	100(W) X 100(L) X 75(D)	40
**CF-AD-150X150-SS	150(W) X 150(L) X 75(D)	20
**CF-AD-225X225-SS	225(W) X 225(L) X 75(D)	10
**CF-AD-300X300-SS	300(W) X 300(L) X 75(D)	5

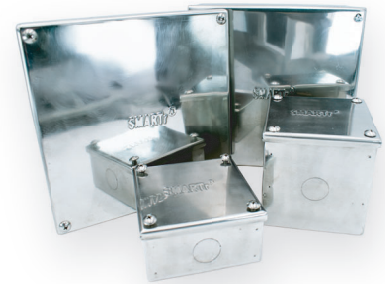
** Made to order, MOQ and lead time apply.

BODY
Material: 316 Stainless Steel
Finishing: Polished

FLAT LID
Material: Stainless Steel
Finishing: Polished

Marking: SMART
IP Rating: IP40 / IP54

Note:
- Stainless Steel screws included
- Boxes are supplied plain without K.O. holes
- Knock-out hole punching available upon request with client-specified dimensions
- Other sizes available for order, MOQ and lead time apply.



STAINLESS STEEL FLEXIBLE CONDUIT

SELECTION CHART

SIZE	ITEM CODE	PACKING	O.D.	COMPATIBLE WITH ADAPTOR'S CODE
16mm	FP-16-SS-SMTR	100FT	19.0 ± 0.35 mm	BF-FA-T
20mm	FP-20-SS-SMTR	100FT	23.0 ± 0.35 mm	
25mm	FP-25-SS-SMTR	100FT	29.0 ± 0.40 mm	
32mm	FP-32-SS-SMTR	100FT	36.0 ± 0.40 mm	
38mm	FP-38-SS-SMTR	50FT	42.5 ± 0.50 mm	
50mm	FP-50-SS-SMTR	50FT	55.0 ± 0.50 mm	

Flexible Material Jacket Properties : 316L Stainless Steel (also available in SS304 / SS316)
: Excellent mechanical strength with flexible capabilities, Thick PVC jacket resistant to oil, acid, and sea water

Temperature Range : -25°C to +150°C

IP Rating Standard : IP65 (when installed with suitable water tight adaptors)
: BS EN 61386 (where applicable)

**Note: - BS 731 and BS EN 50086 have been officially withdrawn and superseded by BS EN 61386.
- Imperial sizes are available upon request.
(Made to order, MOQ and lead time apply)

FLEXIBLE CONDUIT ADAPTORS

FLEXIBLE ADAPTOR (FA-WT)

ITEM CODE	SIZE	CTN (QTY)
FA-WT-SS-20	20mm	500
FA-WT-SS-25	25mm	500

Marking: No
Material: 316L Stainless Steel (also available in SS304 / SS316)
Finishing: Plain, IP Rating: IP65



SPACING SUPPORT FOR FLEXIBLE CONDUITS (GUIDANCE)

NOMINAL CONDUIT SIZE (mm)	MAXIMUM SPACING BETWEEN SUPPORTS	
	HORIZONTAL RUNS (m)	VERTICAL RUNS (m)
≤16	0.3	0.5
17-25	0.4	0.6
26-40	0.6	0.8
Over 40	0.8	1.0

Support Spacing Guidelines for Flexible Conduits
The table provides recommended maximum distances between supports for flexible conduits during installation. As per the 16th Edition of the I.E.E. Wiring Regulations, flexible conduits must not be used as a protective conductor.

TECHNICAL REFERENCE CONDUIT CAPACITY & SPACING

CABLE CAPACITIES OF CONDUIT

The following table provides guidance on calculating the number of single-core PVC-insulated cables that can be installed in various conduit sizes.

Two scenarios are covered:

1. Straight runs not exceeding 3 metres in length.
2. Runs exceeding 3 metres or containing bends or sets.

TYPE OF CONDUCTOR	CONDUCTOR CROSS-SECTIONAL AREA (MM ²)	FACTOR
Solid	1	22
	1.5	27
	2.5	39
Stranded	1.5	31
	2.5	43
	4	58
	6	88
	10	146

STRAIGHT RUNS NOT EXCEEDING 3 METRES IN LENGTH

For each type of cable, obtain its cable factor from Table 1. Add up all the cable factors and compare the total with the conduit factors in Table 2. Select a conduit size with a factor equal to or greater than the total cable factor.

CONDUIT DIA (mm)	FACTOR
16	290
20	460
25	800
32	1400

Table 1 & 2 Cable factors for short straight runs. These tables are based on the 16th edition of the I.E.E Wiring Regulations Appendix 12.

STRAIGHT RUNS EXCEEDING 3 METRES IN LENGTH OR RUNS OF ANY LENGTH INCORPORATING BENDS OR SETS

For each type of cable being used, obtain the cable factor from Table 3. Sum all the cable factors and compare with the conduit factor given in Table 4 for the relevant length of run and the number of bends and sets in that run.

The conduit sizes which will accommodate the cables are those with a conduit factor equal to or greater than the sum of the cable factors.

TYPE OF CONDUCTOR	CONDUCTOR CROSS-SECTIONAL AREA (MM ²)	FACTOR
Solid & Stranded	1	16
	1.5	22
	2.5	30
	4	43
	6	58
	10	105

Table 3 Cable factors for long straight runs or runs incorporating bends.

SPACING SUPPORTS FOR CONDUITS

The following table provides guidance on conduit support spacing.

NOMINAL CONDUIT SIZE (mm)	MAXIMUM SPACING BETWEEN SUPPORTS	
	HORIZONTAL RUNS (m)	VERTICAL RUNS (m)
16mm	0.75	1.0
17-25mm	1.75	2.0
26-40mm	2.0	2.25
Over 40mm	2.25	2.5

This table is based on the 16th Edition of the I.E.E Wiring Regulations, Appendix 11. The data is provided for guidance only, and due consideration must be given to future wiring requirements.

LENGTH OF RUN (m)	CONDUIT DIAMETER (mm)																			
	16	20	25	32	16	20	25	32	16	20	25	32	16	20	25	32	16	20	25	32
	STRAIGHT				ONE BEND				TWO BENDS				THREE BENDS				FOUR BENDS			
1	COVERED BY TABLES 1 & 2				188	303	543	947	177	286	514	900	158	256	463	818	130	213	388	629
1.5					182	294	528	923	167	270	487	857	143	233	422	750	111	182	333	600
2					177	286	514	900	158	256	463	818	130	213	388	692	97	159	292	529
2.5					171	278	500	878	150	244	442	783	120	196	358	643	86	141	260	474
3					167	270	487	857	143	233	422	750	111	182	333	600				
3.5	179	290	521	911	162	263	475	837	136	222	404	720	103	169	311	563				

Table 4 Cable factors for longer runs incorporating bends or sets.

SMARTr[®]

Your Trusted Partner in Electrical & Mechanical Support

www.smartr.com.sg



Scan to visit website



UL Standard Compliant | Certified Quality | Environmental Responsibility | RoHS Compliant

Copyright © 2025 SMARTr International Pte. Ltd. All rights reserved.

All contents, graphics, images contained in this catalogue are protected by copyright laws and/or other laws and/or international treaties, and belong to SMARTr International Pte. Ltd. and/or its Suppliers. These works, content, graphics or images may not be copied, reproduced or imitated whether in whole or in part, unless expressly permitted by SMARTr International Pte. Ltd.

All product dimensions and material specifications are as accurate as possible at time of print. SMARTr International Pte. Ltd. reserves the rights to make specification changes without notice. The company makes every effort to ensure that the information provided in this catalogue is accurate. However, the company cannot guarantee this, and accepts no liability for the use or interpretation of this data. Certain visuals are AI-generated. All images are for illustrative purposes only. The certifications displayed represent compliance achieved by specific SMARTr product lines only.