

## ELECTRICAL METALLIC TUBING EMT CONDUITS & ACCESSORIES CATALOGUE

EMT STEEL CONDUITS

CONDUIT FITTINGS  
& ACCESSORIES

FLEXIBLE METAL & LIQUID-TIGHT  
CONDUIT SYSTEMS



# CONTENTS

## 1 || CONTENTS

Quick reference to SMART's core conduit and accessories range.

## 2 || INTRODUCTION

Some Good Reasons To Use SMART Products

## 3 || ELECTRICAL METALLIC TUBING EMT CONDUITS

(UL 797 & ANSI C80.3)

## 4 || ELECTRICAL METALLIC TUBING EMT CONDUIT FITTINGS

### EMT FITTINGS - ZINC ALLOY

EMT Insulated Bushing  
EMT Set-Screw Connector

### EMT FITTINGS - STEEL

EMT Set-Screw Coupling  
EMT Compression Coupling  
EMT Compression Connector  
EMT 45 Degree Elbow  
EMT 90 Degree Elbow

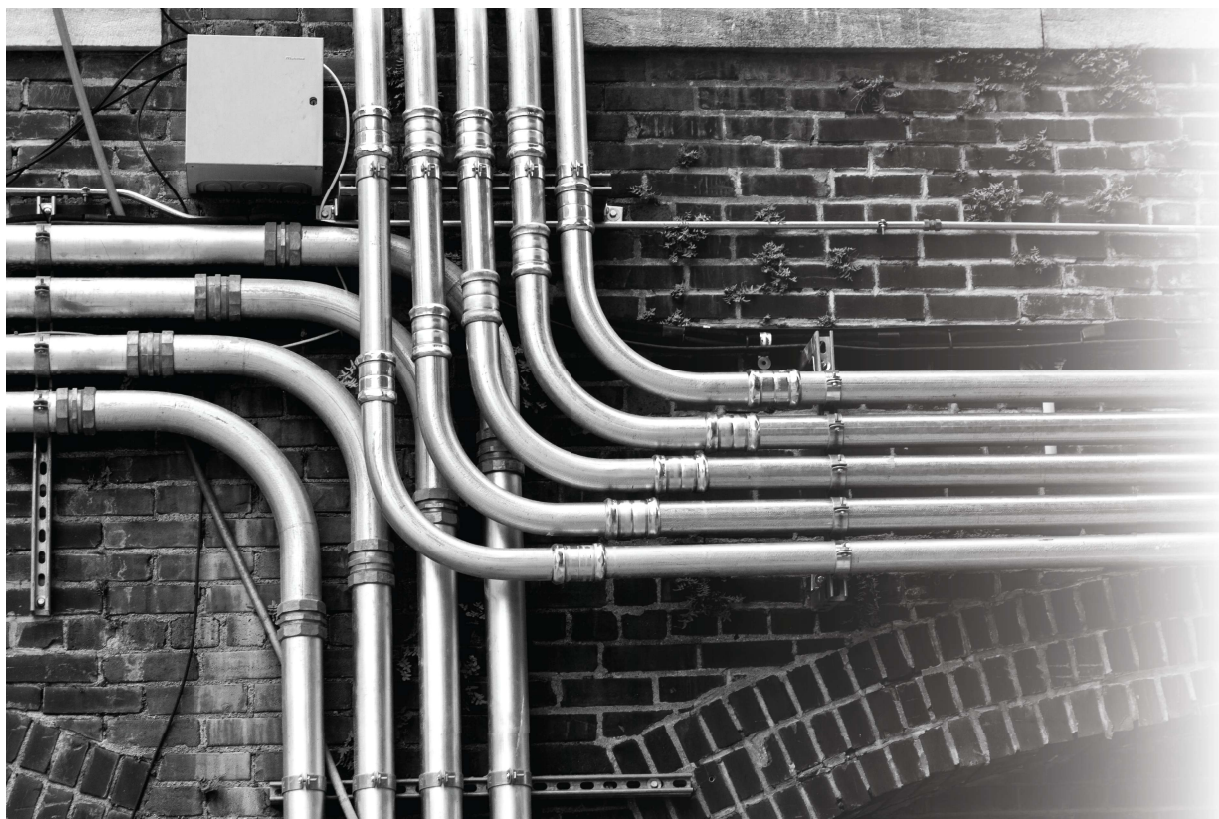
EMT 1 Hole Strap  
EMT 2 Hole Strap  
Conduit Pipe Clamp  
Conduit Pipe Hanger

## 5 || FLEXIBLE METAL CONDUITS & FITTINGS

Straight Squeeze Connector  
Flexible To EMT Adaptor  
Flex To Flex Coupling

## 6 || LIQUID-TIGHT FLEXIBLE METAL CONDUITS & FITTINGS

Liquid/Water Tight Male Adaptor (EFA-WT)  
Liquid/Water Tight Female Adaptor (EFFA-WT)



*Industrial EMT Conduit Installation (For Illustration Only)*



## Your Trusted Partner in Electrical & Mechanical Support

*Reliable Partner in Conduit Solutions Since 1996*



**SMARTr<sup>®</sup> International** is a Singapore-based manufacturer specializing in electrical containment solutions such as **Electrical Metallic Tubing (EMT)**, **conduit fittings**, and **support systems**, serving the region since 1996. Certified under **ISO 9001:2015** and **ISO 14001:2015**, we are committed to delivering industry-compliant, quality-assured solutions across Southeast Asia, Middle East and international markets.

Our production process follows strict QC protocols from raw material selection to final inspection, ensuring **dimensional consistency**, **smooth inner surfaces**, **corrosion resistance**, and **long-term reliability**.

In addition to EMT solutions, we also offer **DfMA-ready solutions** and a range of complementary products such as **BS standard conduits**, **strut channels** metal framing systems, **trunking**, **cable trays**, and **ladder systems** to meet broader project needs.

**SMARTr EMT conduit solutions** are trusted and widely used in major infrastructure, commercial, and industrial projects throughout Singapore and international markets.

## Why Is SMARTr EMT Conduit Better?



High quality mild steel which ensures superior bending and forming properties



Manufactured by cold forming and high frequency welding



Dimensionally accurate with uniform quality



Each Length distinctly marked with embossed branding



Conduits are securely packed and bundled to ensure easy handling and maximum protection

# ELECTRICAL METALLIC TUBING EMT CONDUITS

## EMT CONDUITS (UL 797 & ANSI C80.3)

E545784



**Electrical Metallic Tubing (EMT)** is a lightweight yet strong steel raceway solution designed to provide exceptional mechanical protection for electrical wiring. Commonly referred to as “thin-wall conduit,” EMT features a thinner wall than rigid conduit while maintaining excellent durability.

Manufactured from high-grade mild steel, EMT conduits offers ease of bending and installation, making it the preferred choice for commercial, industrial, and infrastructure projects. Its smooth interior surface ensures reduced wire friction, facilitating faster pull-through and improved efficiency.

SMART EMT is available in a full range of sizes from 1/2" to 4", with hot-dipped galvanized or electro-galvanized finishes, and complies strictly with UL 797 and ANSI C80.3 standards.

## CHARACTERISTICS & APPLICATIONS

- Manufactured in accordance with **UL 797** and **ANSI C80.3** standards.
- High-strength mild steel construction ensures superior mechanical protection.
- Lightweight and easy to handle, ideal for fast and efficient installation.
- Smooth interior surface for effortless wire pulling and reduced friction.
- Available with electro-galvanized or hot-dipped galvanized finishing for enhanced corrosion resistance.
- Widely used in commercial, industrial, and infrastructure projects, including regions with challenging environmental conditions.

### HOT-DIPPED GALVANIZED EMT CONDUIT (UL 797 / ANSI C80.3 STANDARD)

ITEM CODE	SIZE		OUTSIDE DIAMETER		WALL THICKNESS		LENGTH	
ECP-12-4-SMTR	1/2"	16mm	0.706"	17.93mm	0.042"	1.067mm	10ft	3048mm
ECP-34-4-SMTR	3/4"	21mm	0.922"	23.42mm	0.049"	1.245mm	10ft	3048mm
ECP-1-4-SMTR	1"	27mm	1.163"	29.54mm	0.057"	1.448mm	10ft	3048mm
ECP-114-4-SMTR	1 1/4"	35mm	1.510"	38.35mm	0.065"	1.651mm	10ft	3048mm
ECP-112-4-SMTR	1 1/2"	41mm	1.740"	44.20mm	0.065"	1.651mm	10ft	3048mm
ECP-2-4-SMTR	2"	53mm	2.197"	55.82mm	0.065"	1.651mm	10ft	3048mm

### ELECTRO-GALVANIZED EMT CONDUIT (UL 797 / ANSI C80.3 STANDARD)

ITEM CODE	SIZE		OUTSIDE DIAMETER		WALL THICKNESS		LENGTH	
ECP-12-3-SMTR	1/2"	16mm	0.706"	17.93mm	0.042"	1.067mm	10ft	3048mm
ECP-34-3-SMTR	3/4"	21mm	0.922"	23.42mm	0.049"	1.245mm	10ft	3048mm
ECP-1-3-SMTR	1"	27mm	1.163"	29.54mm	0.057"	1.448mm	10ft	3048mm
ECP-114-3-SMTR	1 1/4"	35mm	1.510"	38.35mm	0.065"	1.651mm	10ft	3048mm
ECP-112-3-SMTR	1 1/2"	41mm	1.740"	44.20mm	0.065"	1.651mm	10ft	3048mm
ECP-2-3-SMTR	2"	53mm	2.197"	55.82mm	0.065"	1.651mm	10ft	3048mm

#### APPLICATION TOLERANCES OF EMT CONDUITS:

**Outside Diameter** : ± 0.005 in (0.13mm)  
**Wall Thickness** : (±) 5-10%  
**Length** : ± 0.25" (6.4mm)  
**Standard** : Complies with UL 797 / ANSI C80.3 Standard  
**Available Finishing** : Electro-Galvanized or Zinc Coated Hot-Dipped Galvanized  
**UL File Number** : E545784

\*\*The wall thickness shall not vary more than 0.003" (0.08mm) throughout a 10ft length  
 \*\*Sizes for 2 1/2" ~ 4" are available upon request.

#### FEATURES OF SMART EMT CONDUIT:

- EMT conduits are sometimes called thin wall conduits
- Unthreaded, making it easy to coupler and for a faster installation
- Light and easy to carry and handle
- Superior quality finish and good standard export packing

# ELECTRICAL METALLIC TUBING EMT CONDUIT FITTINGS

## EMT FITTINGS

### EMT SET-SCREW COUPLING

ITEM CODE	SIZE
ECF-12-SC	1/2"
ECF-34-SC	3/4"
ECF-1-SC	1"
ECF-114-SC	1 1/4"
ECF-112-SC	1 1/2"
ECF-2-SC	2"



\*\*Available in Zinc Alloy (Die-Cast) or Steel, based on client's requirement.  
 \*\* Screws supplied in Steel material.

### EMT SET-SCREW CONNECTOR

ITEM CODE	SIZE
ECF-12-SCN	1/2"
ECF-34-SCN	3/4"
ECF-1-SCN	1"
ECF-114-SCN	1 1/4"
ECF-112-SCN	1 1/2"
ECF-2-SCN	2"



\*\*Available in Zinc Alloy (Die-Cast) or Steel, based on client's requirement.  
 \*\* Screws supplied in Steel material.

### EMT COMPRESSION COUPLING

ITEM CODE	SIZE
ECF-12-CC	1/2"
ECF-34-CC	3/4"
ECF-1-CC	1"
ECF-114-CC	1 1/4"
ECF-112-CC	1 1/2"
ECF-2-CC	2"



\*\*Available in Zinc Alloy (Die-Cast) or Steel, based on client's requirement.

### EMT COMPRESSION CONNECTOR

ITEM CODE	SIZE
ECF-12-CCN	1/2"
ECF-34-CCN	3/4"
ECF-1-CCN	1"
ECF-114-CCN	1 1/4"
ECF-112-CCN	1 1/2"
ECF-2-CCN	2"



\*\*Available in Zinc Alloy (Die-Cast) or Steel, based on client's requirement.

### EMT 45 DEGREE ELBOW

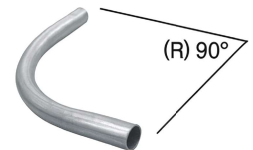
ITEM CODE	SIZE
ECF-12-45 ELB	1/2"
ECF-34-45 ELB	3/4"
ECF-1-45 ELB	1"
ECF-114-45 ELB	1 1/4"
ECF-112-45 ELB	1 1/2"
ECF-2-45 ELB	2"



\*\*Available in Steel only.

### EMT 90 DEGREE ELBOW

ITEM CODE	SIZE
ECF-12-90 ELB	1/2"
ECF-34-90 ELB	3/4"
ECF-1-90 ELB	1"
ECF-114-90 ELB	1 1/4"
ECF-112-90 ELB	1 1/2"
ECF-2-90 ELB	2"



\*\*Available in Steel only.

### EMT 1 HOLE STRAP

ITEM CODE	SIZE
ECF-12-STRAP-1H	1/2"
ECF-34-STRAP-1H	3/4"
ECF-1-STRAP-1H	1"
ECF-114-STRAP-1H	1 1/4"
ECF-112-STRAP-1H	1 1/2"
ECF-2-STRAP-1H	2"



\*\*Available in Steel only.

### EMT 2 HOLE STRAP

ITEM CODE	SIZE
ECF-12-STRAP-2H	1/2"
ECF-34-STRAP-2H	3/4"
ECF-1-STRAP-2H	1"
ECF-114-STRAP-2H	1 1/4"
ECF-112-STRAP-2H	1 1/2"
ECF-2-STRAP-2H	2"



\*\*Available in Steel only.

### CONDUIT PIPE CLAMP

ITEM CODE	SIZE
ECF-12-PCLAM	1/2"
ECF-34-PCLAM	3/4"
ECF-1-PCLAM	1"
ECF-114-PCLAM	1 1/4"
ECF-112-PCLAM	1 1/2"
ECF-2-PCLAM	2"



\*\*Available in Steel only.

### CONDUIT PIPE HANGER

ITEM CODE	SIZE
ECF-12-PHGR	1/2"
ECF-34-PHGR	3/4"
ECF-1-PHGR	1"
ECF-114-PHGR	1 1/4"
ECF-112-PHGR	1 1/2"
ECF-2-PHGR	2"



\*\*Available in Steel only.

### EMT INSULATED BUSHING

ITEM CODE	SIZE
ECF-12-BUSH	1/2"
ECF-34-BUSH	3/4"
ECF-1-BUSH	1"
ECF-114-BUSH	1 1/4"
ECF-112-BUSH	1 1/2"
ECF-2-BUSH	2"



\*\*Available in Zinc Alloy (Die-Cast) only.

**Available Finishing** : Hot-Dipped Galvanized / Zinc Electro-Galvanized  
**Standards** : Complies with UL 514B / UL 2239  
**Sizes** : 2 1/2" ~ 4" sizes are available upon request  
 (Made to order, MOQ and lead time apply)



# FLEXIBLE METAL CONDUITS & FITTINGS



## FLEXIBLE METAL CONDUITS

SMART<sup>®</sup> flexible metal conduit protects electrical cables from vibration, movement, and mechanical impact, reducing the risk of electrical hazards and cable damage. Made from high-quality galvanized steel, it offers excellent flexibility, durability, and a smooth inner surface for easy cable pulling. Ideal for general wiring in commercial, industrial, and residential applications, including oil & gas, marine, aviation, healthcare, data centres, machinery, and transport industries.

ITEM CODE	TRADE SIZE	PACKING	OUTSIDE DIAMETER	INSIDE DIAMETER	MIN. BEND RADIUS
EFP-12-S	1/2"	100ft	21.84-23.37 mm	15.88-16.38mm	75mm
EFP-34-S	3/4"	100ft	26.54-28.07 mm	20.62-21.21mm	100mm
EFP-1-S	1"	100ft	33.02-35.05 mm	25.40-26.42mm	125mm
EFP-114-S	1 1/4"	50ft	39.37-41.40 mm	31.75-33.02mm	160mm
EFP-112-S	1 1/2"	50ft	46.99-49.53 mm	38.10-40.01mm	190mm
EFP-2-S	2"	25ft	59.69-62.23 mm	50.80-52.83mm	255mm

<b>Flexible Material Properties</b>	: Hot-Dipped Galvanized (HDG) Steel or Electro-Galvanized Steel
<b>Temperature Range</b>	: -25°C to +350°C (Metallic sheath withstands higher temperatures if required)
<b>IP Rating Construction</b>	: IP40 (standard fittings) : Corrugated galvanized steel conduit for flexibility and mechanical strength
<b>Features</b>	: Suitable for dry indoor wiring in commercial, industrial, and residential applications
<b>Standard</b>	: Complies with UL 1

*\*\*Minimum Bend Radius is provided as a reference for safe installation practices.  
For applications requiring tighter bends or special conditions, please contact SMART<sup>®</sup> technical support for guidance.*

## STRAIGHT SQUEEZE CONNECTOR

ITEM CODE	SIZE
EFA-12-SQC	1/2"
EFA-34-SQC	3/4"
EFA-1-SQC	1"
EFA-114-SQC	1 1/4"
EFA-112-SQC	1 1/2"
EFA-2-SQC	2"



**Material** : Zinc Alloy (Die-Cast)  
**Standards** : Complies with UL 514B

*\*\*Sizes for 2 1/2" ~ 4" are available upon request.  
\*\* Screws supplied in Steel material.*

## FLEX TO FLEX COUPLING

ITEM CODE	SIZE
EFC-12	1/2"
EFC-34	3/4"
EFC-1	1"
EFC-114	1 1/4"
EFC-112	1 1/2"
EFC-2	2"



**Material** : Zinc Alloy (Die-Cast)  
**Standards** : Complies with UL 514B

*\*\*Sizes for 2 1/2" ~ 4" are available upon request.*

## FLEXIBLE TO EMT COUPLING

ITEM CODE	SIZE
EFA-12	1/2"
EFA-34	3/4"
EFA-1	1"
EFA-114	1 1/4"
EFA-112	1 1/2"
EFA-2	2"



**Material** : Zinc Alloy (Die-Cast)  
**Standards** : Complies with UL 514B

*\*\*Sizes for 2 1/2" ~ 4" are available upon request.  
\*\* Screws supplied in Steel material.*

# LIQUID-TIGHT FLEXIBLE METAL CONDUITS & FITTINGS



## LIQUID-TIGHT FLEXIBLE METAL CONDUITS

SMARTr Liquid-Tight Flexible Conduits provides superior protection for electrical wiring in harsh environments exposed to moisture, oil, dust, and mechanical stress. The conduit consists of a flexible galvanized steel core covered with a durable, waterproof PVC outer jacket, delivering excellent corrosion resistance and liquid-tight performance. This conduit is ideal for both indoor and outdoor applications, including machinery, HVAC systems, and industrial equipment, where flexibility and environmental protection are required.

ITEM CODE	TRADE SIZE	PACKING	OUTSIDE DIAMETER	INSIDE DIAMETER	MIN. BEND RADIUS
EFP-12-PC-LT	1/2"	100ft	22.0±0.45mm	16mm	65mm
EFP-34-PC-LT	3/4"	100ft	26.7±0.50mm	20mm	75mm
EFP-1-PC-LT	1"	100ft	31.9±0.50mm	25mm	100mm
EFP-114-PC-LT	1 1/4"	50ft	40.6±0.60mm	32mm	120mm
EFP-112-PC-LT	1 1/2"	50ft	47.0±0.70mm	38mm	140mm
EFP-2-PC-LT	2"	50ft	59.0±0.70mm	50mm	180mm

**Flexible Material** : Steel (Corrugated PVC Jacket)  
**Properties** : Provides durable protection for electrical wiring  
**Temperature Range** : -20°C to +105°C  
**IP Rating** : IP65 (with proper liquid-tight fittings)  
**Construction** : Flexible steel core with PVC outer jacket for easy installation and smooth cable pulling  
**Features** : Ideal for general wiring in industrial, commercial, and outdoor environments



### LIQUID/WATER TIGHT MALE ADAPTOR (EFA-WT)

ITEM CODE	UL TRADE SIZE	METRIC SIZE
EFA-WT-20X16	3/4" X 1/2"	20mm X 16mm
EFA-WT-20X20	3/4" X 3/4"	20mm X 20mm
EFA-WT-25X20	1" X 3/4"	25mm X 20mm
EFA-WT-25X25	1" X 1"	25mm X 25mm
EFA-WT-32X32	1 1/4" X 1 1/4"	32mm X 32mm
EFA-WT-38X38	1 1/2" X 1 1/2"	38mm X 38mm

**Material:** Steel / Alloy

**Finishing:** Galvanized

**IP Rating:** IP65

**\*\*Angle Adaptor available for order. Made to order, MOQ and lead time apply.**

**\*\*Sizes for 2 1/2" ~ 4" are available upon request.**



### LIQUID/WATER TIGHT FEMALE ADAPTOR (EFA-WT)

ITEM CODE	UL TRADE SIZE	METRIC SIZE
<b>**EFA-WT-20X16</b>	3/4" X 1/2"	20mm X 16mm
<b>**EFA-WT-20X20</b>	3/4" X 3/4"	20mm X 20mm
<b>**EFA-WT-25X20</b>	1" X 3/4"	25mm X 20mm
<b>**EFA-WT-25X25</b>	1" X 1"	25mm X 25mm
<b>**EFA-WT-32X32</b>	1 1/4" X 1 1/4"	32mm X 32mm
<b>**EFA-WT-38X38</b>	1 1/2" X 1 1/2"	38mm X 38mm

**Material:** Steel / Alloy

**Finishing:** Galvanized

**IP Rating:** IP65

**\*\*Made to order, MOQ and lead time apply.**

**\*\*Sizes for 2 1/2" ~ 4" are available upon request.**

# SMARTr<sup>®</sup>

Your Trusted Partner in Electrical & Mechanical Support  
[www.smartr.com.sg](http://www.smartr.com.sg)



Scan to visit website



UL Standard Compliant | Certified Quality | Environmental Responsibility | RoHS Compliant

Copyright © 2025 SMARTr International Pte. Ltd. All rights reserved.

All contents, graphics, images contained in this catalogue are protected by copyright laws and/or other laws and/or international treaties, and belong to SMARTr International Pte. Ltd. and/or its Suppliers. These works, content, graphics or images may not be copied, reproduced or imitated whether in whole or in part, unless expressly permitted by SMARTr International Pte. Ltd.

All product dimensions and material specifications are as accurate as possible at time of print. SMARTr International Pte. Ltd. reserves the rights to make specification changes without notice. The company makes every effort to ensure that the information provided in this catalogue is accurate. However, the company cannot guarantee this, and accepts no liability for the use or interpretation of this data. Certain visuals are AI-generated. All images are for illustrative purposes only. The certifications displayed represent compliance achieved by specific SMARTr product lines only.